

LSU
Deposit and Collateral Report
For the Quarter Ended December 31, 2020

Deposits Requiring Posting of Collateral:	Demand Deposit Sweep/MMA Repurchase	Certificates of Deposit	Total Deposits in Financial Institutions	Collateral (1)
LSU A&M, LSU Alexandria, LSU Eunice, LSU Shreveport, and LSU Health New Orleans				
Chase - LSU, Health Plan Premium	\$ 210,136,071		\$ 210,136,071	\$ 273,334,551
Cottonport Bank - LSU Ag Center	2,469,885		2,469,885	2,771,552
Capital One - LSU-A	7,744,494		7,744,494	7,744,494
St. Landry Bank - LSU-E	895,982		895,982	1,014,551
Campus Federal Credit Union - LSU-S		\$ 100,455	100,455	250,000
Capital One - LSU-S	18,086,724		18,086,724	18,188,558
Chase - HSCNO	112,816,322	18,600	112,834,922	119,491,881
Total	\$ 352,149,478	\$ 119,055	\$ 352,268,533	\$ 422,795,587
LSU Health Shreveport				
JPMC-Shreveport	\$ 87,421,931		\$ 87,421,931	\$ 115,955,430
JPMC-Shreveport Endowment Fds	1,277,467		1,277,467	
Total	\$ 88,699,398	\$ -	\$ 88,699,398	\$ 115,955,430
LSU Health Care Services Division				
JP Morgan Chase (HCSD)	\$ 108,376,180		\$ 108,376,180	\$ 108,376,180
Capital One (MCLNO Trust Fund)	3,940,264		3,940,264	4,014,072
Total	\$ 112,316,444	\$ -	\$ 112,316,444	\$ 112,390,252
Total Requiring Collateral	\$ 553,165,320	\$ 119,055	\$ 553,284,375	\$ 651,141,269
Deposits In Trust or Federal Obligations Not Requiring Collateral				
Federated Money Markets	\$ 8,900,115		\$ 8,900,115	
Federated Funds-Treas. Oblig. (2)	16,232,202		16,232,202	
Total	\$ 25,132,317	\$ -	\$ 25,132,317	
Total Deposits	\$ 578,297,637	\$ 119,055	\$ 578,416,692	

(1) Collateral amounts include FDIC coverage of \$250,000 on Demand Deposits, \$250,000 on CD's and \$250,000 by the National Credit Union Share Insurance Fund on deposits with Campus Federal Credit Union.

(2) One Group & Federated Funds are no-load, open ended mutual funds investing in U.S. Treasury obligations.

LSU
Investment Summary
For the Quarter Ended December 31, 2020

Fund Description	As of 7/1/2020		As of 9/30/2020		As of 12/31/2020		As of 3/31/2021		As of 06/30/2021	
	Value	Cost	Market Value	Cost	Market Value	Cost	Market Value	Cost	Market Value	
Current Funds										
Cash/Sweeps	\$375,120,082	\$580,056,212	\$580,056,212	\$547,947,589	\$547,947,589	\$0	\$0	\$0	\$0	
Money Market Accounts/Repos (A)	\$0	\$8,930,221	\$8,930,221	\$8,058,226	\$8,058,226	\$0	\$0	\$0	\$0	
Certificates of Deposit	\$100,413	\$100,411	\$100,411	\$100,455	\$100,455	\$0	\$0	\$0	\$0	
Treasury Notes	\$34,083,826	\$33,261,475	\$34,653,588	\$34,100,069	\$35,307,018	\$0	\$0	\$0	\$0	
CMO's	\$13,289,523	\$12,690,922	\$12,715,426	\$12,113,675	\$12,137,860	\$0	\$0	\$0	\$0	
Agency Securities (B)	\$54,110,875	\$67,077,178	\$68,724,705	\$68,351,528	\$69,745,410	\$0	\$0	\$0	\$0	
Mortgaged Backed Securities	\$42,826,102	\$39,274,622	\$39,830,857	\$12,615,757	\$12,896,709	\$0	\$0	\$0	\$0	
Equity Securities (C)	\$55,912	\$0	\$56,907	\$0	\$71,880	\$0	\$0	\$0	\$0	
Municipal Bonds (E)	\$118,337,558	\$119,421,589	\$121,288,094	\$154,584,896	\$155,773,477	\$0	\$0	\$0	\$0	
Corporate Bonds (D)	\$159,589,112	\$140,372,399	\$148,885,753	\$148,378,235	\$158,838,357	\$0	\$0	\$0	\$0	
Total	\$797,513,403	\$1,001,185,029	\$1,015,242,174	\$986,250,430	\$1,000,876,981	\$0	\$0	\$0	\$0	
Endowment Funds										
Cash/Sweeps	\$1,428,396	\$1,284,010	\$1,284,010	\$1,277,467	\$1,277,467	\$0	\$0	\$0	\$0	
Money Market Accounts/Repos (A)	\$36,872	\$791,886	\$791,886	\$534,617	\$534,617	\$0	\$0	\$0	\$0	
Certificates of Deposit	\$18,600	\$18,600	\$18,600	\$18,600	\$18,600	\$0	\$0	\$0	\$0	
Agency Securities (B)	\$1,380,320	\$1,315,805	\$1,379,514	\$1,315,805	\$1,373,161	\$0	\$0	\$0	\$0	
Mortgaged Backed Securities	\$1,608,820	\$1,411,674	\$1,518,819	\$1,406,900	\$1,515,269	\$0	\$0	\$0	\$0	
Equity Securities (C)	\$9,965,087	\$5,028,188	\$9,995,603	\$4,816,366	\$10,521,975	\$0	\$0	\$0	\$0	
Mutual Funds	\$67,050,161	\$60,529,377	\$69,560,847	\$63,376,325	\$75,276,849	\$0	\$0	\$0	\$0	
Municipal Bonds (E)	\$2,769,136	\$2,689,578	\$2,781,804	\$4,256,683	\$4,326,428	\$0	\$0	\$0	\$0	
Corporate Bonds (D)	\$8,780,099	\$8,727,513	\$9,376,642	\$8,235,273	\$8,922,543	\$0	\$0	\$0	\$0	
Total	\$93,037,491	\$81,796,631	\$96,707,725	\$85,238,036	\$103,766,909	\$0	\$0	\$0	\$0	
Other Funds										
Cash/Sweeps	\$4,798,073	\$3,698,689	\$3,698,689	\$3,940,264	\$3,940,264	\$0	\$0	\$0	\$0	
Money Market Accounts/Repos (A)	\$31,382,800	\$9,217,020	\$9,217,020	\$16,539,474	\$16,539,474	\$0	\$0	\$0	\$0	
Equity Securities (C)	\$221,811	\$0	\$170,277	\$0	\$209,411	\$0	\$0	\$0	\$0	
Total	\$36,402,684	\$12,915,709	\$13,085,986	\$20,479,738	\$20,689,149	\$0	\$0	\$0	\$0	
Grand Total	\$926,953,578	\$1,095,897,369	\$1,125,035,885	\$1,091,968,204	\$1,125,333,039	\$0	\$0	\$0	\$0	
Deposits in Financial Institutions										
Total Cash/Sweeps/MMA/Repos	\$412,766,223	\$603,978,038	\$603,978,038	\$578,297,637	\$578,297,637	\$0	\$0	\$0	\$0	
Total Certificates of Deposit	\$119,013	\$119,011	\$119,011	\$119,055	\$119,055	\$0	\$0	\$0	\$0	
Total Deposits	\$412,885,236	\$604,097,049	\$604,097,049	\$578,416,692	\$578,416,692	\$0	\$0	\$0	\$0	
Other Investments										
Treasury Notes	\$34,083,826	\$33,261,475	\$34,653,588	\$34,100,069	\$35,307,018	\$0	\$0	\$0	\$0	
CMO's	\$13,289,523	\$12,690,922	\$12,715,426	\$12,113,675	\$12,137,860	\$0	\$0	\$0	\$0	
Agency Securities (B)	\$55,491,195	\$68,392,983	\$70,104,219	\$69,667,333	\$71,118,571	\$0	\$0	\$0	\$0	
Mortgaged Backed Securities	\$44,434,922	\$40,686,296	\$41,349,676	\$14,022,657	\$14,411,978	\$0	\$0	\$0	\$0	
Equity Securities (C)	\$10,242,810	\$5,028,188	\$10,222,787	\$4,816,366	\$10,803,266	\$0	\$0	\$0	\$0	
Mutual Funds	\$67,050,161	\$60,529,377	\$69,560,847	\$63,376,325	\$75,276,849	\$0	\$0	\$0	\$0	
Municipal Bonds (E)	\$121,106,694	\$122,111,167	\$124,069,898	\$158,841,579	\$160,099,905	\$0	\$0	\$0	\$0	
Corporate Bonds (D)	\$168,369,211	\$149,099,912	\$158,262,395	\$156,613,508	\$167,760,900	\$0	\$0	\$0	\$0	
Total Other	\$514,068,342	\$491,800,320	\$520,938,836	\$513,551,512	\$546,916,347	\$0	\$0	\$0	\$0	
Grand Total	\$926,953,578	\$1,095,897,369	\$1,125,035,885	\$1,091,968,204	\$1,125,333,039	\$0	\$0	\$0	\$0	
LSU Paid Campuses										
Current Funds										
Cash/Sweeps	\$233,311,025	\$414,498,300	\$414,498,300	\$352,149,478	\$352,149,478	\$0	\$0	\$0	\$0	
Money Market Accounts/Repos (A)	\$0	\$8,930,221	\$8,930,221	\$8,058,226	\$8,058,226	\$0	\$0	\$0	\$0	
Certificates of Deposit	\$100,413	\$100,411	\$100,411	\$100,455	\$100,455	\$0	\$0	\$0	\$0	
CMO's	\$13,289,523	\$12,690,922	\$12,715,426	\$12,113,675	\$12,137,860	\$0	\$0	\$0	\$0	
Agency Securities (B)	\$47,010,006	\$61,971,133	\$63,641,495	\$63,267,989	\$64,708,163	\$0	\$0	\$0	\$0	
Mortgaged Backed Securities	\$42,813,155	\$39,261,335	\$39,818,037	\$12,602,605	\$12,884,013	\$0	\$0	\$0	\$0	
Equity Securities (C)	\$55,912	\$0	\$56,907	\$0	\$71,880	\$0	\$0	\$0	\$0	
Municipal Bonds (E)	\$110,753,126	\$111,212,249	\$112,961,740	\$141,501,351	\$143,682,671	\$0	\$0	\$0	\$0	
Corporate Bonds (D)	\$127,532,047	\$110,145,502	\$116,902,723	\$109,399,635	\$117,049,450	\$0	\$0	\$0	\$0	
Total	\$574,865,207	\$758,810,073	\$769,625,260	\$699,193,414	\$710,842,196	\$0	\$0	\$0	\$0	
Endowment Funds										
Money Market Accounts/Repos (A)	\$36,872	\$791,886	\$791,886	\$534,617	\$534,617	\$0	\$0	\$0	\$0	
Certificates of Deposit	\$18,600	\$18,600	\$18,600	\$18,600	\$18,600	\$0	\$0	\$0	\$0	
Agency Securities (B)	\$1,380,320	\$1,315,805	\$1,379,514	\$1,315,805	\$1,373,161	\$0	\$0	\$0	\$0	
Mortgaged Backed Securities	\$1,608,820	\$1,411,674	\$1,518,819	\$1,406,900	\$1,515,269	\$0	\$0	\$0	\$0	
Equity Securities (C)	\$9,948,283	\$5,020,538	\$9,978,358	\$4,808,716	\$10,504,405	\$0	\$0	\$0	\$0	
Municipal Bonds	\$2,769,136	\$2,689,578	\$2,781,804	\$4,256,683	\$4,326,428	\$0	\$0	\$0	\$0	
Corporate Bonds (D)	\$8,780,099	\$8,727,513	\$9,376,642	\$8,235,273	\$8,922,543	\$0	\$0	\$0	\$0	
Total	\$24,542,130	\$19,975,594	\$25,845,623	\$20,576,594	\$27,195,023	\$0	\$0	\$0	\$0	
Other Funds										
Money Market Accounts/Repos (A)	\$22,490,726	\$320,912	\$320,912	\$7,639,359	\$7,639,359	\$0	\$0	\$0	\$0	
Total	\$22,490,726	\$320,912	\$320,912	\$7,639,359	\$7,639,359	\$0	\$0	\$0	\$0	
Grand Total	\$621,898,063	\$779,106,579	\$795,791,795	\$727,409,367	\$745,676,578	\$0	\$0	\$0	\$0	

LSU
Investment Summary
For the Quarter Ended December 31, 2020

Fund Description	As of 7/1/2020			As of 9/30/2020			As of 12/31/2020			As of 3/31/2021		As of 06/30/2021	
	Value	Cost	Market Value	Cost	Market Value	Cost	Market Value	Cost	Market Value	Cost	Market Value		
LSU Health Shreveport													
Current Funds													
Cash/Sweeps S.	\$65,852,590	\$89,514,968	\$89,514,968	\$87,421,931	\$87,421,931								
Cash/Sweeps	\$65,852,590	\$89,514,968	\$89,514,968	\$87,421,931	\$87,421,931	\$0	\$0	\$0	\$0	\$0	\$0	\$0	
Treasury Notes (B)	\$34,083,826	\$33,261,475	\$34,653,588	\$34,100,069	\$35,307,018								
Agency Securities (B)	\$7,100,869	\$5,106,045	\$5,083,210	\$5,083,539	\$5,037,247								
Mortgaged Backed Securities (B)	\$12,947	\$13,287	\$12,820	\$13,152	\$12,696								
Municipal Bonds (E)	\$7,584,432	\$8,209,340	\$8,326,354	\$13,083,545	\$12,090,806								
Corporate Bonds (D)	\$32,057,065	\$30,226,897	\$31,983,030	\$38,978,600	\$41,788,907								
Total	\$146,691,729	\$166,332,012	\$169,573,970	\$178,680,836	\$181,658,605	\$0	\$0	\$0	\$0	\$0	\$0	\$0	
Endowment Funds													
Cash/Sweeps	\$1,428,396	\$1,284,010	\$1,284,010	\$1,277,467	\$1,277,467								
Equity Securities (C)	\$16,804	\$7,650	\$17,245	\$7,650	\$17,570								
Mutual Funds	\$67,050,161	\$60,529,377	\$69,560,847	\$63,376,325	\$75,276,849								
Total	\$68,495,361	\$61,821,037	\$70,862,102	\$64,661,442	\$76,571,886	\$0	\$0	\$0	\$0	\$0	\$0	\$0	
Grand Total	\$215,187,090	\$228,153,049	\$240,436,072	\$243,342,278	\$258,230,491	\$0	\$0	\$0	\$0	\$0	\$0	\$0	
LSU HCSD													
Current Funds													
Cash/Sweeps	\$75,956,467	\$76,042,944	\$76,042,944	\$108,376,180	\$108,376,180								
Total	\$75,956,467	\$76,042,944	\$76,042,944	\$108,376,180	\$108,376,180	\$0	\$0	\$0	\$0	\$0	\$0	\$0	
Other Funds													
Cash/Sweeps	\$4,798,073	\$3,698,689	\$3,698,689	\$3,940,264	\$3,940,264								
Money Market Accounts/Repos (A)	\$8,892,074	\$8,896,108	\$8,896,108	\$8,900,115	\$8,900,115								
Equity Securities (C)	\$221,811	\$0	\$170,277	\$209,411	\$209,411								
Total	\$13,911,958	\$12,594,797	\$12,765,074	\$12,840,379	\$13,049,790	\$0	\$0	\$0	\$0	\$0	\$0	\$0	
Grand Total	\$89,868,425	\$88,637,741	\$88,808,018	\$121,216,559	\$121,425,970	\$0	\$0	\$0	\$0	\$0	\$0	\$0	
System Total	\$926,953,578	\$1,095,897,369	\$1,125,035,885	\$1,091,968,204	\$1,125,333,039	\$0	\$0	\$0	\$0	\$0	\$0	\$0	

- * Negative balance in the cash/Sweeps section of the current funds does not represent an actual negative bank balance, rather it represents a timing difference of the allocation of the current fund
- ** Small endowment funds at LSUS were moved to the LSUS Foundation to accommodate Workday
- *** LSU Paid Campuses include the following: LSU, LSU Ag Center, LSUA, LSUE, LSUS, LSU Health New Orleans, and the LSU Pennington Biomedical Research Center.

BENCHMARK NOTES (Example Only)

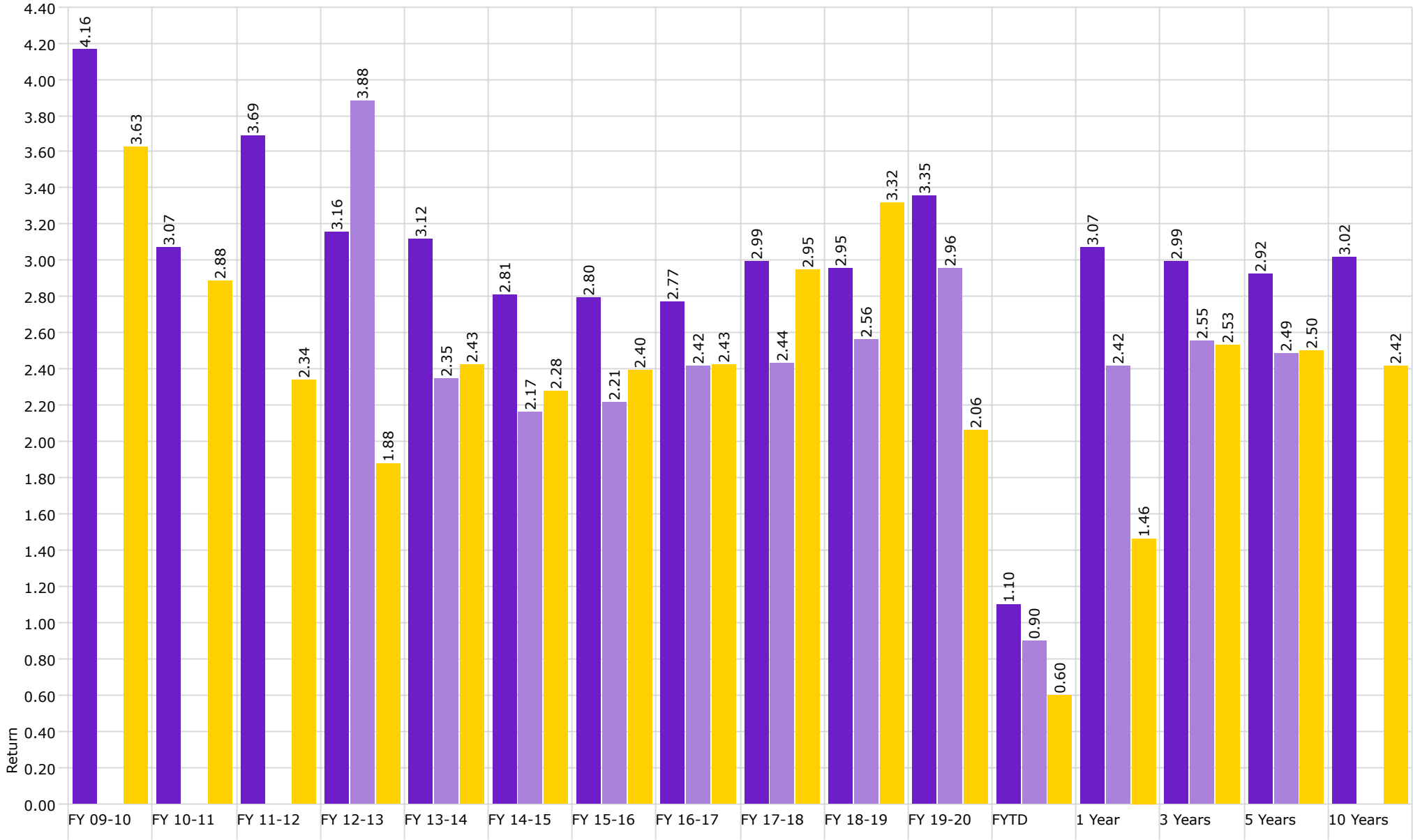
- (A) Benchmarked against 90 day T-Bill
- (B) Benchmarked against Barclay's US Agg Bond TR USC
- (C) US equities benchmarked against Russell 3000 and international against MSCI emerging market
- (D) Benchmarked against XYZ
- (E) Benchmarked against XYZ

Disclaimer: Pursuant to PM-9, corporate bonds/notes only available for investment beginning 7-1-2011
Louisiana law provides for restrictions on maturity and allocation and may effect benchmark comparison:



Investment Management Program Non Endowed Accounts **Realized Yield**

As of 12/31/2020



■ Non Endowed

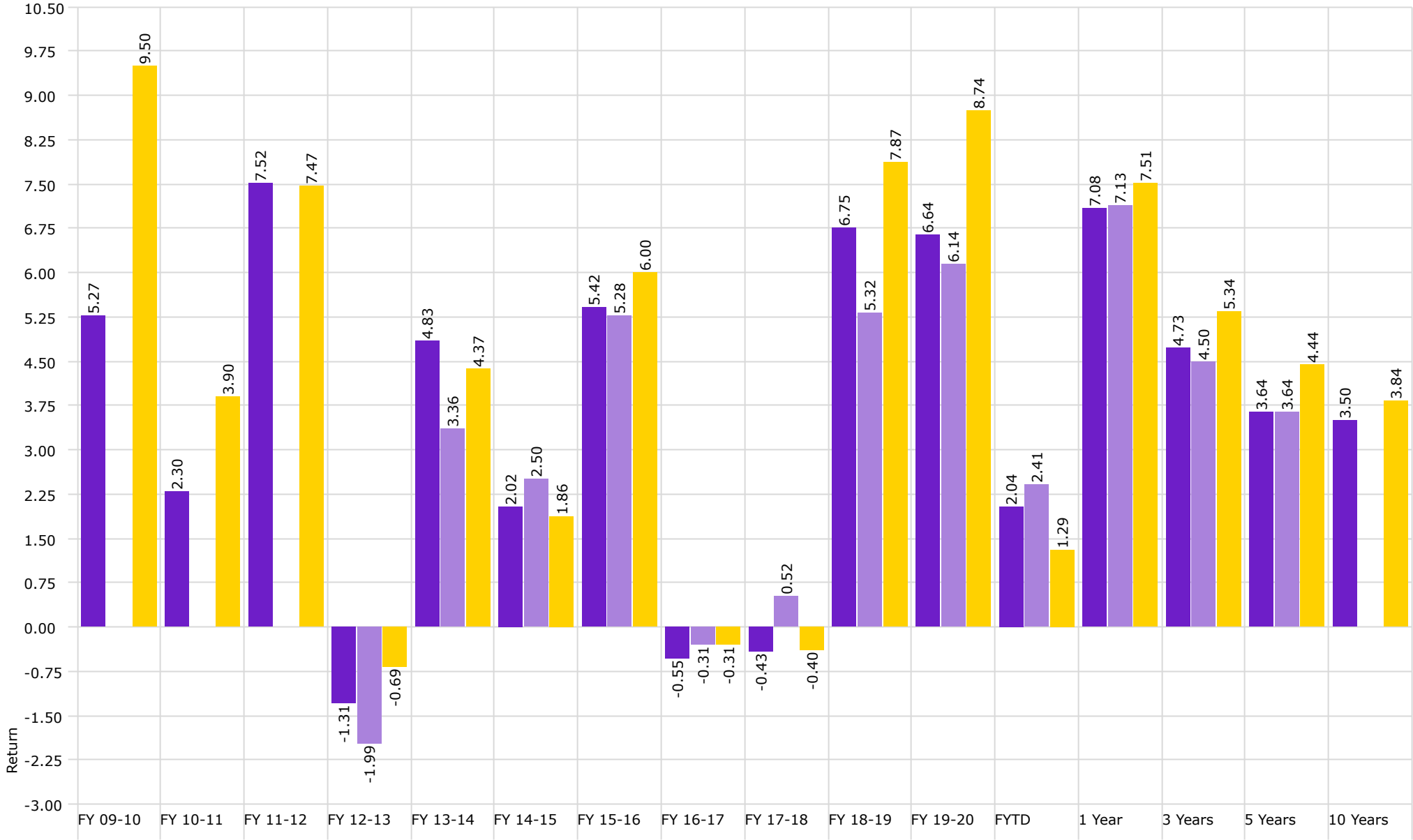
■ Health Plan

■ Barclays Aggregate Bond Index



Investment Management Program Non Endowed Accounts **Total Return**

As of 12/31/2020



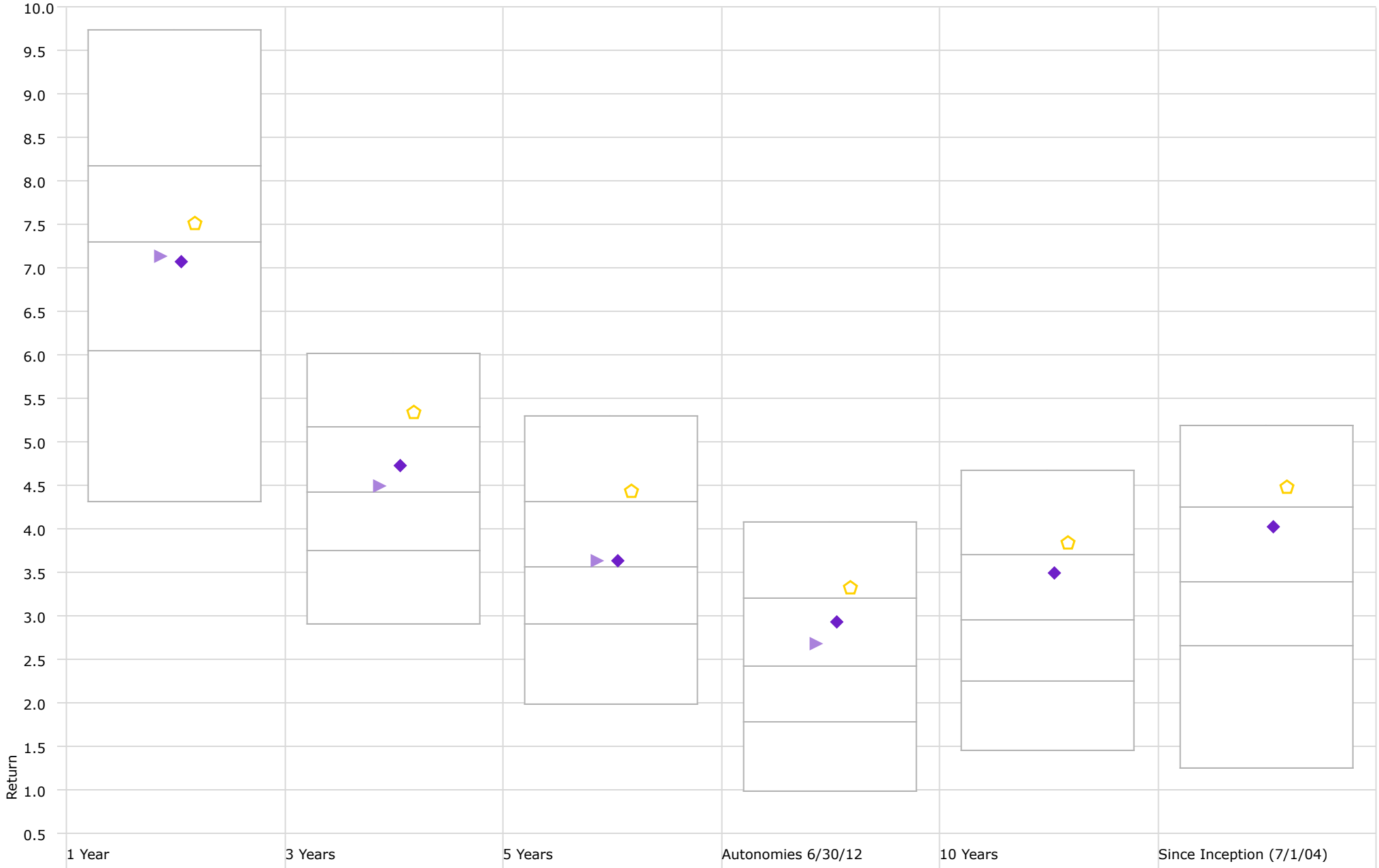
■ Non Endowed

■ Health Plan

■ Barclays Aggregate Bond Index

Performance Relative to Peer Group

Peer Group (5-95%): All Managed Investments - U.S. - Intermediate Core Bond



◆ Non-Endowed

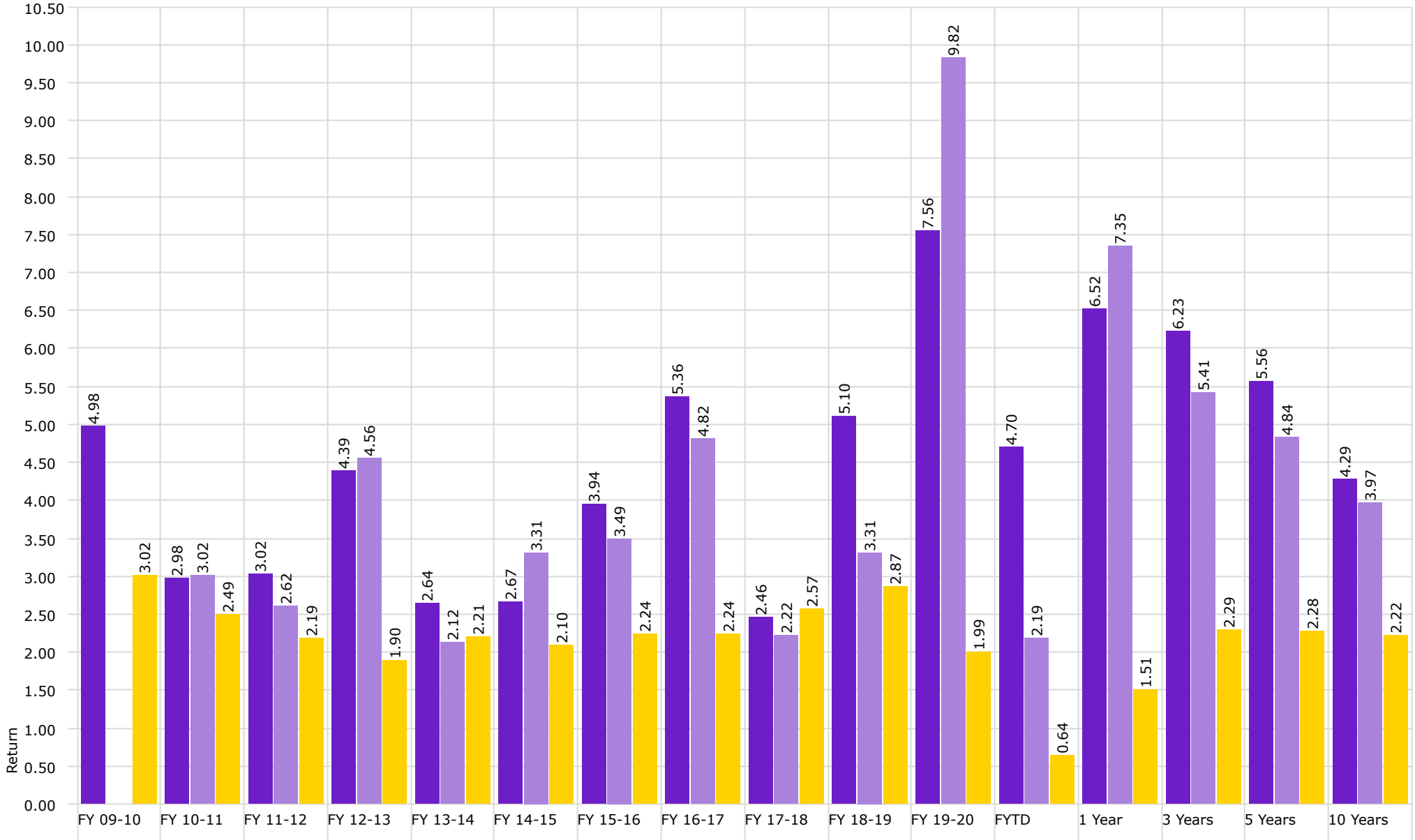
▶ Health Plan

⬠ Barclays Aggregate Bond Index



Investment Management Program Endowed Accounts **Realized Yield**

As of 12/31/2020



Endowment

Osher

Endowed Realized Yield



Investment Management Program Endowed Accounts **Total Return**

As of 12/31/2020

